



Getting Started with FANS

Please follow these brief instructions to immediately benefit from the many capabilities of FANS, FlyteComm's Flight tracker and flight status Arrival Notification System.

STEP 1

Download from FlyteComm Web Site:

- **Click on the download link from the FlyteComm website. (Note: Be sure to take note of the location that you downloaded the file to).**
- **Locate the folder that the file was downloaded to and double click on the file named FANS.**
- **A Winzip window will appear. Click Unzip. Once completed, click OK, then close the Winzip window.**
- **Go to your C:\ drive and locate the directory named C:\FANS_INSTALL.**
- **Double click on FANS_install directory.**
- **Double click on setup.exe (blue computer icon).**
- **Follow the instructions to complete the installation process.**

Or load via a CD-ROM:

- **Insert the FANS CD into your CD-ROM drive**
- **Follow the instructions to complete the installation process.**

STEP 2

Register FANS to start your free trial:

Once you have established an Internet connection, click on the FANS icon located on your desktop. The first time you run FANS, you'll be prompted to enter registration information. After doing so, the flight tracker and flight status status information download will begin. The time it takes the first database to load depends upon the speed of your connection to the Internet (anywhere from 15 seconds to 5 minutes). **Note: A 10-min. warning message may be displayed during initial FANS registration. This is normal. After you've completed the registration and the database has downloaded, you should not see this message displayed anymore.**

STEP 3

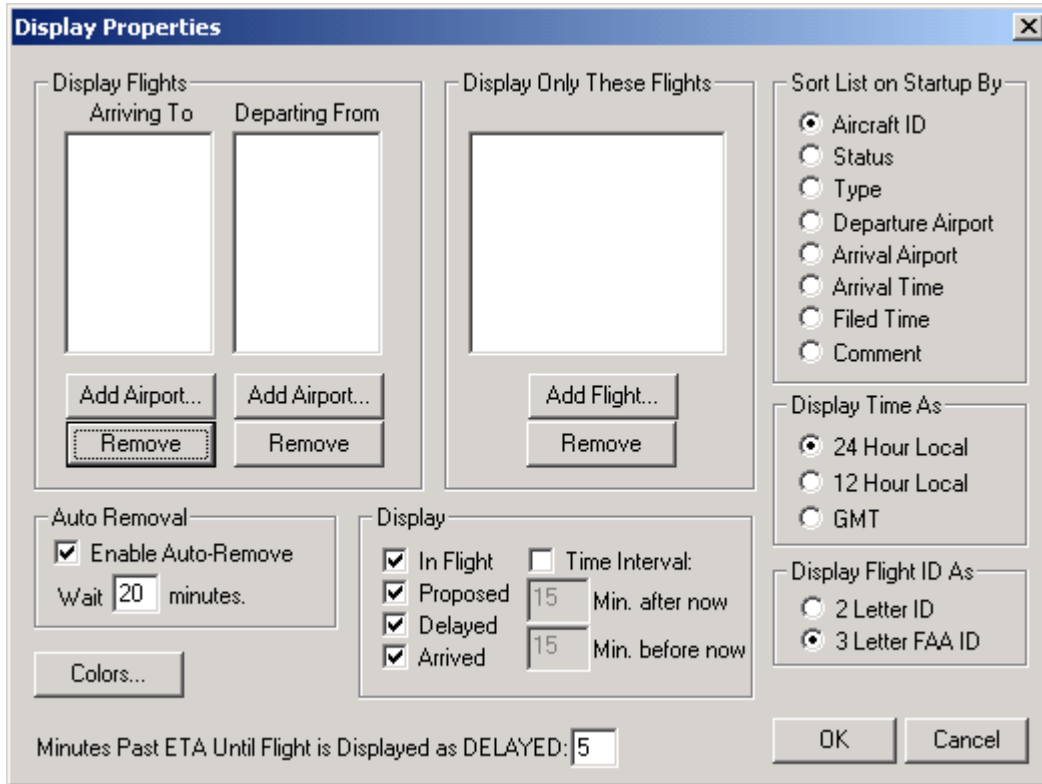
Configure your FANS display:

When you launch the FANS product you will initially see a black screen. The flight tracker and flight status database is being downloaded at this time. The time it takes the first database to load depends upon the speed of your connection to the Internet (anywhere from 15 seconds to 5 minutes).

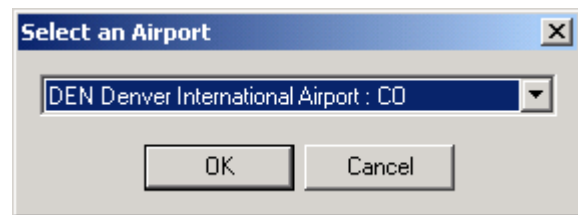
Once the flight tracker and flight status database has downloaded you will see blank white screen. You must go through the initial set up before any flights will be displayed. You only have to go through this display setup process the first time you use FANS.

To set your FANS display properties, click Display -> Properties. Once there, you will have to make some decisions. Are you planning to track arrival flights and/or departure flights or are you only interested in viewing a specific flight tracker and flight status?

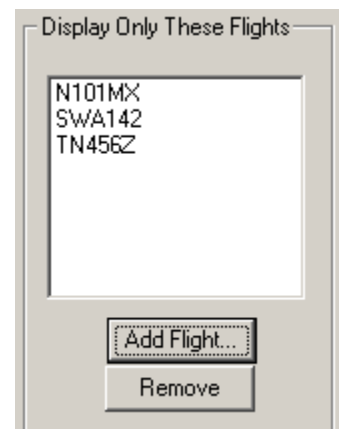
The **Arriving To** section will allow you to see all IFR flights into a particular airport. The **Departing From** section allows you to see flights departing from a particular airport.



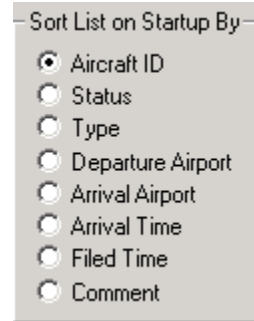
Click on **Add Airport** for each section. The **Select an Airport** box will appear. Type in the airport 3-letter code or scroll down through the list until you find the applicable airport listed, click OK. Continue adding all airports of interest. If you want to remove an airport you've already added, highlight the airport to remove, then click **Remove**. **Repeat process for Departing Flights.**



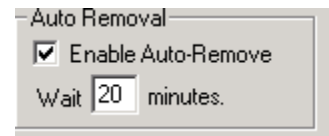
If there are specific flights you are interested in viewing, go to **Display Only These Flights** section. Click on **Add Flight tracker and flight status**. Then, type in the flight tracker and flight status number(s) and/or tail number(s) you care to monitor. You must include the "N" or "TN" prefix with each GA tail#. To Remove a flight tracker and flight status, highlight it from the list, then click **Remove**.



You will now need to decide how you want to sort your data by choosing the respective field in the **Sort List on Startup By** section. This setting tells FANS how to sort upon startup only. You can change the sort order at any time in the display by clicking the respective field header on the display screen.

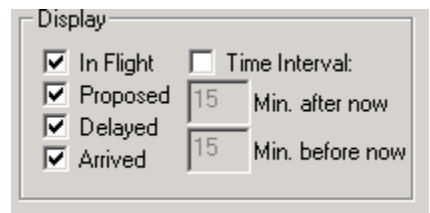


To automatically remove flights once they have landed, Check the **Enable Auto-Removal** box, and then choose the duration of time to keep arrived flights on your display after they have landed. Once the flight tracker and flight status has arrived, “Arrived” will be listed in the status field on your display.

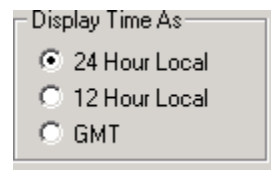


If you do not choose the Auto Removal function, arrived flights will have to be removed manually (by clicking each one individually from the display screen and then clicking on “yes” to remove).

In the **Display** section, select which flight tracker and flight status information you care to have shown in the FANS display.

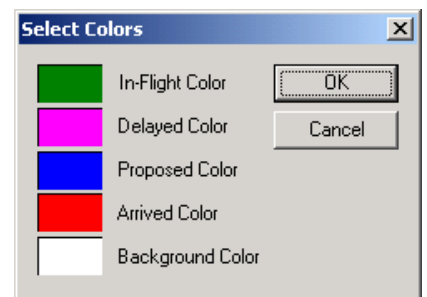


FANS also allows you to choose the duration of time you are able to see flights (optional). You have two options, either see flights all day by not checking **Time Interval** or choose a time window for which flights are to be displayed. For example, if you only want to see flights 60 minutes from now and 60 minutes before now, type in 60 in the both fields, once you’ve checked the time interval box.

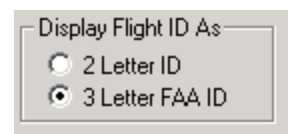


You have the option of choosing 24 hour, 12 hour or GMT for your flight tracker and flight status times in the **Display Time As** section.

To assign unique colors for each flight tracker and flight status status field, making the display easier to read, go to the **Colors** section. Choose a color for in-flight tracker and flight status aircraft, delayed flights, proposed flights, arrived flights and for the background by clicking in the colored box next to each status field. Click OK after each selection.



You have the option of choosing 2 or 3 letter airline codes. Go to **Display Flight tracker and flight status ID As** and make your selection.



FANS allows you to see delayed flights. You make the determination as to how late you want flights to be before FANS displays them as Delayed. Choose the

minutes past the proposed arrival time. As soon as the flight tracker and flight status is delayed by the time chosen, you will see “delayed” in the status field.

Minutes Past ETA Until Flight is Displayed as DELAYED:

Column Headers:

Display Help		STATUS	TYPE	DEPART	ARRIVE	ARRIVAL TIME	FILED	COMMENT
AIRCRAFT ID								
BAW287	In Flight			EGLL	SFO	04:17	15:54	>
SKW5364	Arrived	E120	ACV	SFO	SFO	09:01	09:08	>
AWE864	Proposed	B733	LAS	SFO	SFO	09:01	09:01	>
SKW5465	Arrived		RDD	SFO	SFO	09:12*	09:10*	>
UAL862	Delayed	B744	YSSY	SFO	SFO	09:12	09:06	>
ASA690	Delayed	B734	YVR	SFO	SFO	09:13	09:06	>
UAL8144	In Flight	B733	SEA	SFO	SFO	09:16	09:17	>
N910CN	Delayed	FA50	CRQ	SFO	SFO	09:20	09:13	>
UAL89	In Flight	A319	PHL	SFO	SFO	09:21	09:21	>
DAL1025	In Flight	B752	SLC	SFO	SFO	09:23	09:21	>
SKW5479	Proposed	E120	MRY	SFO	SFO	09:25	09:25	>
UAL1804	Delayed	B733	LAX	SFO	SFO	09:25	09:12	>
EJA953	Delayed	C750	SMO	SFO	SFO	09:25	09:19	>
UAL297	In Flight	B762	BWI	SFO	SFO	09:26	09:25	>
ROK801	Delayed	B752	LAS	SFO	SFO	09:27	09:11	>
UAL1687	In Flight	B733	PHX	SFO	SFO	09:27	09:27	>
UAL81	In Flight	B752	EWB	SFO	SFO	09:29	09:29	>
SKW5477	Proposed	E120	SBA	SFO	SFO	09:32	09:32	>
NWA28	In Flight	B742	LAX	SFO	SFO	09:33	09:45	>
UAL1559	In Flight	A319	IAH	SFO	SFO	09:37	09:40	>
UAL8150	In Flight	B752	IAD	SFO	SFO	09:38	09:39	>
COA214	In Flight	B737	IAH	SFO	SFO	09:39	09:37	>
UAL8123	In Flight	B762	JFK	SFO	SFO	09:40	09:41	>

On your display you will see 7 fields, all of which can be sorted by clicking on and dragging the field header end-tab. The fields shown are described below:

AIRCRAFT ID: This column contains the airline identifier and flight tracker and flight status number for each flight tracker and flight status in bound to the airport selected or each flight tracker and flight status that has been requested in the Display Properties dialog box.

STATUS: Flight tracker and flight status status is displayed in this column and can be one of the following:

Proposed – The flight tracker and flight status has not departed for this destination airport yet.

In Flight tracker and flight status – The flight tracker and flight status has departed and is en-route to its selected destination.

Delayed – The flight tracker and flight status has departed and is late for his intended arrival time.

Arrived – The flight tracker and flight status has arrived at the selected destination airport.

TYPE: The aircraft type is displayed in this column.

DEPART: The three (3) or four (4) letter identifier of the departure airport will be displayed.

ARRIVE: The three (3) or four (4) letter identifier of the selected destination airport.

ARRIVAL TIME: The arrival time can be displayed as Greenwich Mean Time (GMT), 12-hour clock time (in AM/PM mode), or 24-hour military time. If 12-hour time is selected, AM or PM will be appended to the four-digit time value. In addition,

some 'Arrived' flights will have a (*) attached to the arrival time stamp. This indicates that the arrival time is a calculated time. If and when an actual arrival message is received the (*) will disappear. **A yellow bar will appear on newly arrived flights since the last screen update.**

FILED: The filed entry indicates the time the flight tracker and flight status plan originally gave for this flights landing time.

COMMENT: This field is available to show comments that you might want to enter regarding a specific flight tracker and flight status, such as the names of the passengers you are meeting on this flight tracker and flight status. To enter a comment, place the cursor in the comment field of the flight tracker and flight status you want to comment on and left click. When the 'Aircraft Comment' dialog box appears, enter your comment and press OK. The comment will then be posted with the flight tracker and flight status. Scroll bars on the bottom and right sides of the display allow the user to scroll the display to see data that may not fit on the screen.

You will also see an update clock in the lower right corner of the screen. 'Update' indicates the time of the last screen update. This time display is in the same format as the 'Arrival Time' display.

*****FANS cannot be minimized. It was designed to either run on its own display or in the background. If you do not want either, close FANS by going to File -> Exit. When asked if you want to dump the database click NO. The FTM (Flight tracker and flight status Table Manager) will continue to run, keeping the data current. When you want the FANS display to re-appear, simply restart FANS by double-clicking on the shortcut icon.**

Product Requirements:

Windows 95/98/ME/2000/NT/XP
200 MHz or Faster Pentium (or Equivalent) Processor
64 Megabytes Minimum, 128 Megabytes Recommended
56 Kbps. Modem or LAN Internet connection
400 Megabytes of Available Disc Space

Contact Information:

FlyteComm, Inc.
333 West Santa Clara Street, Suite 622
San Jose, CA 95113

Phone: 408-795-1405

Fax: 408-999-7421

sales@flytecomm.com

support@flytecomm.com